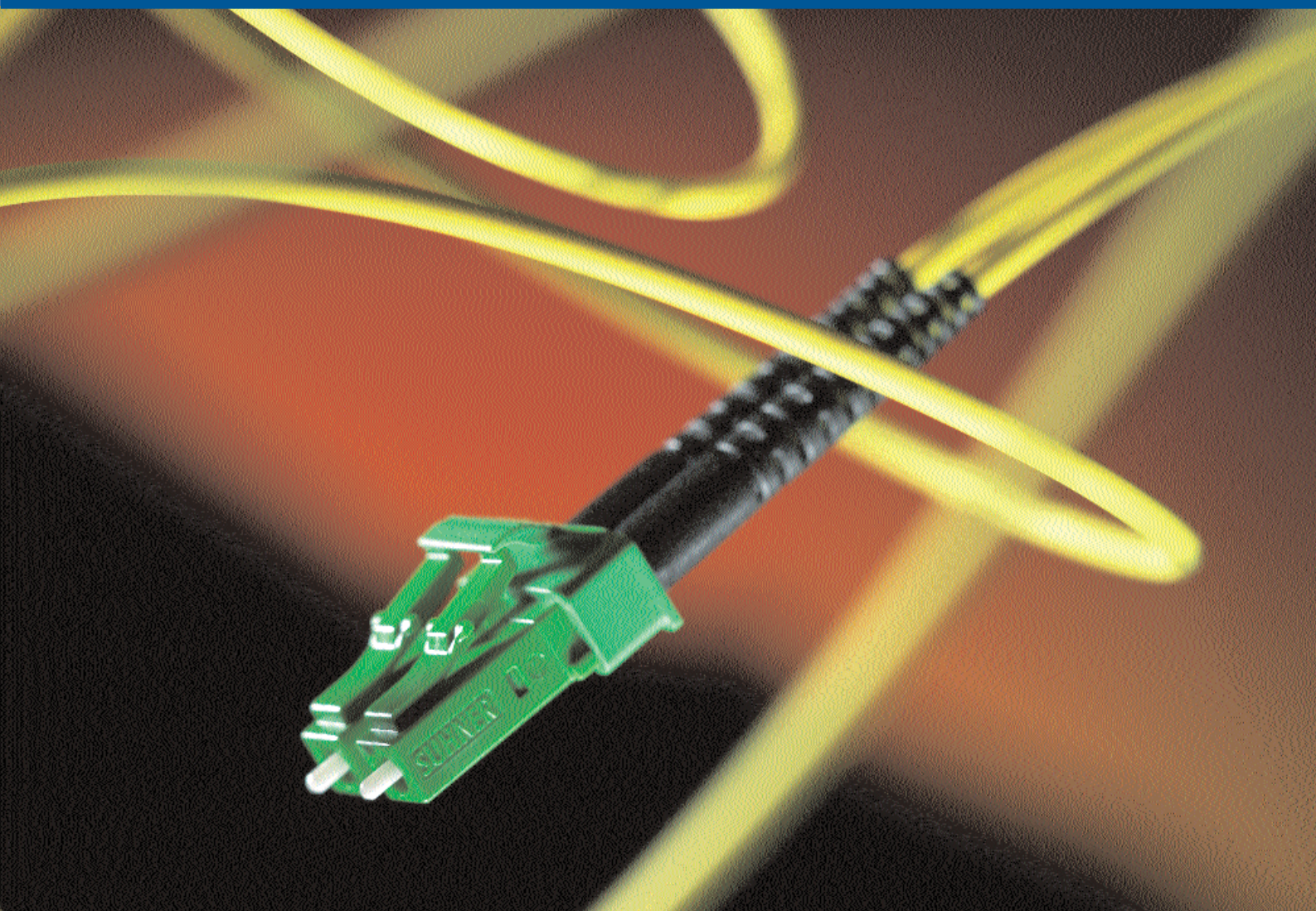




SUHNER® FIBEROPTIC LC CONNECTOR FAMILY



SUHNER LC: the reliable SFF connector

High performance at high packing density

Today's patch fields with high packing densities do not only require a compact design of the single components, but also a stable optical transmission performance. The LC connector is based on the 1.25 mm ferrule technology and has set worldwide a new standard. The inhouse manufacturing of the LC guarantees high quality and high transmission performance thanks to self-designed and patented improvements.

Features/Benefits

- SUHNER FIBEROPTIC tuning for highest optical performance
- Removable color coding of connectors
- 0.9 mm tubes as well as cables up to 2.4 mm can be terminated
- Singlemode PC, UPC and APC and Multimode
- Snap-in locking element for easy and secure handling
- Duplex adapter fits RJ-45 cutout
- Telcordia GR-326-CORE, issue 3 compliance
- Suitable for HighPower applications

Applications

- Local Area Networks (LAN) and inhouse cabling systems
- telecommunications networks
- transmission technology
- patching in distribution equipment
- Fiber-to-the-home
- Sensor systems
- Measuring technique
- Railways

Complete LC Product Family from SUHNER FIBEROPTIC



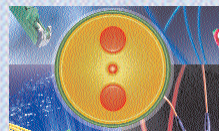
LC-MU hybrid adapter



LC-LX.5 hybrid adapter



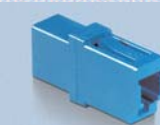
LC attenuator



LC PM connector (under development)



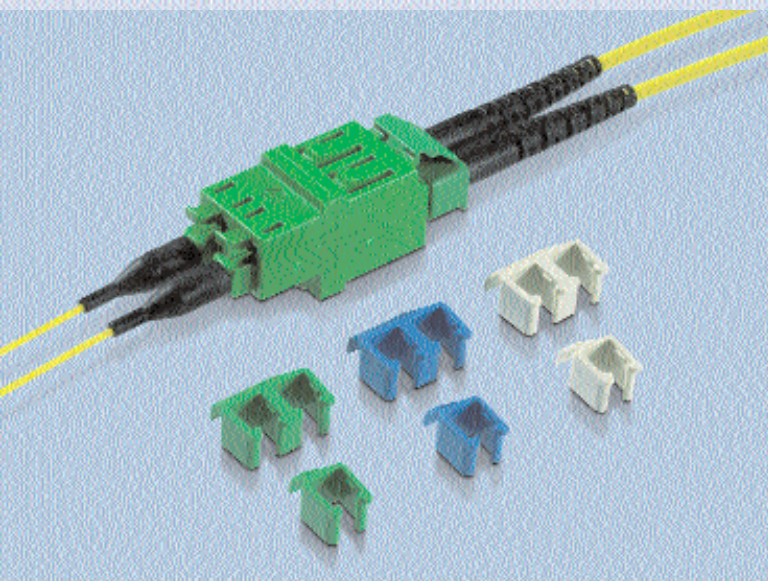
LC terminator



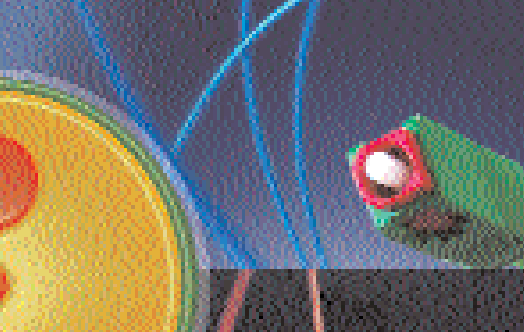
LC simplex adapter



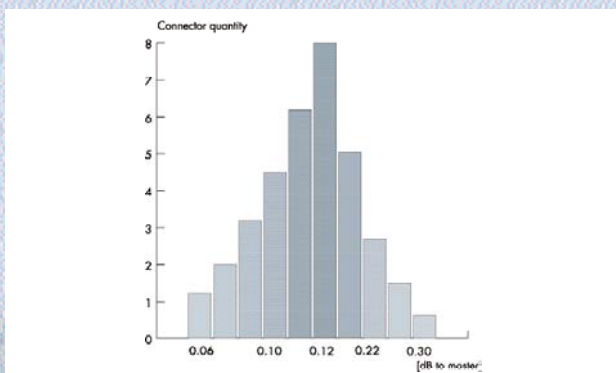
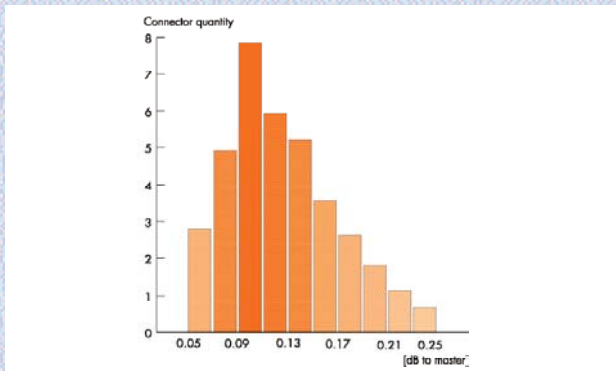
LC duplex SC footprint



The simplex coding clips are available in 12 different colors.



Connector for high packing densities

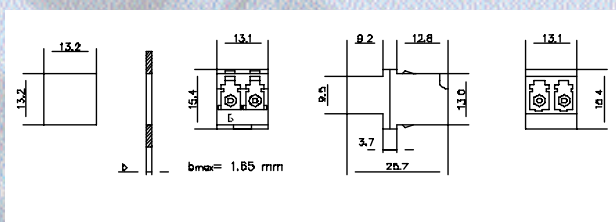
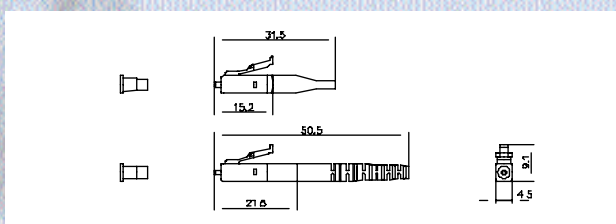


Premium Class

	each-to-each	to master
Insertion loss	max. 0.3 dB	0.25 dB
	typ. 0.09 dB	
Return loss	PC	> 45 dB
	APC	> 85 dB
Ferrule end face geometry according to Telcordia GR-326-Core, issue 3		
Tuning	all connectors are adjusted	

High-End Class

	each-to-each	to master
Insertion loss	max. 0.4 dB	0.35 dB
	typ. 0.12 dB	
Return loss	PC	> 45 dB
	UPC	> 50 dB
	APC	> 85 dB
Ferrule end face geometry according to Telcordia GR-326-Core, issue 3		
Tuning	all connectors are adjusted	



Technical Data LC

Operating temperature	-40° C to +85° C, conditioned by cable type
Durability	min. 500 cycles
Connector material	UL 94-V0, full ceramic zirconia
Adapter material	UL 94-V0, slotted ceramic sleeve
Standards	IEC 61754-20 prEN 50377-7 TIA 604-10

Ordering Information LC Assemblies

A- 1 - 9 - 85 / 85 - 2 - 2.5 A

Optical Performance

C - Premium class (max. 0.3 dB) F - UPC Premium (max. 0.3 dB/> 50 dB)

D - UPC High End (max. 0.4/> 50 dB)

Cable length, in meters

Number of connectors

1 - Pigtail 2 - Patchcord

Connector code 1st side/2nd side

Code	Connector	Code	Connector	Code	Connector
00	no connector	70	FSC PC	86	FLC APC Simplex
30	FCPC	73	FSC APC 8°	88	FLC Duplex
33	FCPC APC 8° WK	74	FSC APC 9°	89	FLC APC Duplex
34	FCPC APC 8° SK	77	FSC Duplex	90	FLSH PC
40	FLSA PC (DIN)	80	FLX.5	93	FLSH APC 8°
43	FLSA APC 8°	83	FLX.5 APC 8°		
45	FMU PC	85	FLC PC		

others see general catalogue

Fiber type

9 - SM E9/125 50 - MM G50/125 62 - MM G62.5/125

Numbers of fibers

1 - Simplex 2 - Duplex

Cord or buffer diameter and colour

A - 0.9 mm, pigtail CH-/CW (E9 yellow/G50 orange/G62.5 blue)

LH - 1.7 mm, Simplex/Duplex (fig. 8) (E9 yellow/G50 orange/G62.5 grey)

KH - 2.1 mm, Simplex (E9 yellow)

B - 2.4 mm, Simplex (E9 yellow)

Ordering information connector (without clip)

FLC-Z/K-A005	LC SM, ¹⁾ blue	FLC-Z/K-H001	LC SM Premium, ¹⁾ blue
FLC-Z/K-A006	LC SM, ²⁾ blue	FLC-Z/K-H002	LC SM Premium, ²⁾ blue
FLC-Z/K-A600	LC SM APC, ¹⁾ green	FLC-Z/K-H600	LC SM Premium APC, ¹⁾ green
FLC-Z/K-A601	LC SM APC, ²⁾ green	FLC-Z/K-H601	LC SM Premium APC, ²⁾ green
FLC-Z/K-B004	LC MM, ¹⁾ beige		
FLC-Z/K-B005	LC MM, ²⁾ beige		

¹⁾ < 1 mm tube ²⁾ ruggedised cable

Complementary products

FLC-FLC-A100-02	LC Duplex, Singlemode, blue	LC terminator	on request
FLC-FLC-A600-02	LC APC Duplex, Singlemode, green	LC simplex adapter	on request
FLC-FLC-A200-02	LC Duplex, Multimode, beige	LC duplex SC footprint	on request

Crimpsets

009-BK-H001	black	021-BK-H001	black
017-BK-H001	black	024-BK-H001	black

Duplex clip

FLC-DUP-BG1	Duplex clip beige	FLC-CLP-BG1	Simplex clip beige
FLC-DUP-BL1	Duplex clip blue	FLC-CLP-BL1	Simplex clip blue
FLC-DUP-GN1	Duplex clip green	FLC-CLP-GN1	Simplex clip green

Simplex clip (on request 12 colors)

HUBER+SUHNER is certified according to ISO 9001 and ISO 14001.

WAIVER

While the information contained in this folder has been carefully compiled to the best of our present knowledge, it is not intended as representation or warranty of any kind on our part regarding the suitability of the products concerned for any particular use or purpose and neither shall any statement contained herein be construed as a recommendation to infringe any industrial property rights or as a license to use any such rights. The suitability of each product for any particular purpose must be checked beforehand with our specialists.



HUBER+SUHNER AG

Fiber Optics Division

CH-9100 Herisau

Phone +41 (0)71 353 41 11

Fax +41 (0)71 353 46 78

www.hubersuhner.com